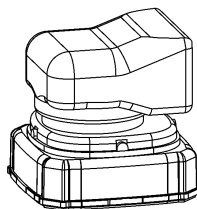


MODEL 9901LED MINIBAR

w/Worklight Mounting Option



(Worklight not included)



This light utilizes high-intensity LED Lamps. DO NOT stare directly into the light while it is on, as momentary blindness and/or permanent eye damage may occur.

Please Note: These instructions are provided as a general guideline only. Specific mounting, wiring, and/or weather-sealing may be necessary and are the sole responsibility of the installer. Star Headlight & Lantern Co., Inc. assumes no responsibility for the integrity of the installation for this or any of its products.

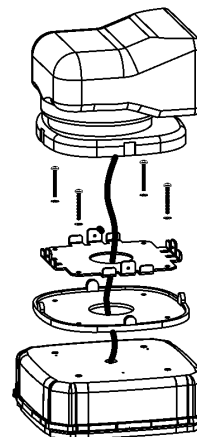
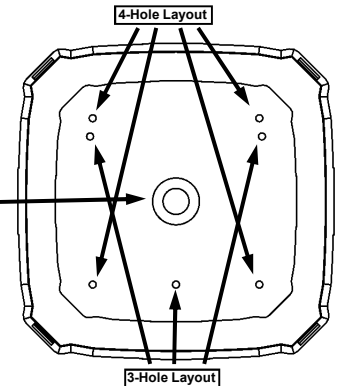
IMPORTANT: Please read all of the following instructions before installing your new light.

Mounting Instructions **(when used with optional Worklight)**

The model you received has been designed to be compatible with a Go Light™ GT, Radio Ray, Stryker, Stryker Hardwire, Stryker ST Series (or most other worklights with identical mounting patterns). For proper installation, first mount the worklight to the minibar, then mount the minibar/worklight assembly to the vehicle.

Mount The Worklight To The Minibar

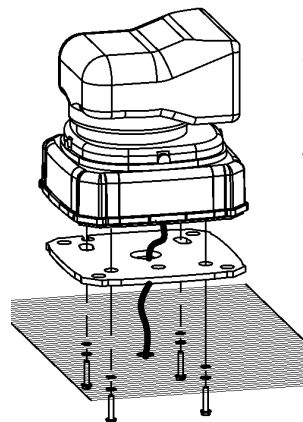
1. Use an 11/64" bit to carefully drill out the 3 or 4 holes in the dome that correspond with the mounting pattern of your worklight. Ensure that your bit is perpendicular to the surface of the dome.
2. Use an 1/2" drill to drill out the center post hole of the dome to allow for wire access.



3. Following the manufacturer's instructions for the worklight, remove the base from the worklight.
4. Place the worklight base on the top of the minibar dome and align the corresponding holes.
5. Use the #8-32 X 1-1/4" 18-8 pan head mounting screws and washers provided with the minibar to attach the worklight base to the minibar (4-screw version shown).
6. Route the wire harness from the worklight through the center hole in the worklight base and the minibar dome and follow the manufacturer's instructions included with your worklight to reassemble it to the base.



Mount The Minibar/Worklight Assembly To The Vehicle



1. Using the gasket as a template, mark the three or four mounting holes and the center wire hole (if you will be needing one).
2. Use an 11/64" bit to drill out the 3 or 4 holes that you marked on the vehicle mounting surface.
3. Use a 1/2" drill to drill out the center wire hole (if needed).
4. Route your wires through the center hole of the gasket and mounting surface (if applicable)
5. Attach the Minibar/Worklight assembly using the enclosed #8-32 X 3/4" 18-8 hex head screws (for mounting surfaces 3/16"-3/8" thick), flat washers, and tooth washers as shown to the left. Insert the bolts from below, fastening them **into the same threaded inserts** used to attach the worklight inside the minibar. Tighten until snug.



(Note: Use longer bolts if your mounting surface is thicker than 3/8")

Hard Wire Instructions (Perm Mount Models)

CAUTION: All wires connected to the positive terminal of the battery should be fused at the battery for their rated load. **Testing the light before this fuse is properly installed will void the warranty on the light.**

Refer to the instructions enclosed with your worklight for proper connection of those wires.

Connect the worklight wires as follows:

BLACK - (Ground) Connect to the negative side of the battery.

RED - (Power) Connect to +12 VDC through your switch. *Be sure to use a 10 amp fuse when connecting the switch to the positive side of the power supply.*

PURPLE - (Optional - High/Low) Switches the light between High and Low power.

- **High Power Only:** Leave disconnected (cover wire with wire nut or tape).
- **Low Power Only:** Connect to +12VDC or Ground.
- **High/Low Switching Option:** Connect to 12VDC or Ground through a switch.

GREEN - Touch and release to +12VDC or GROUND to scroll through patterns.

WHITE - (Synchronization) To synchronize the flashing of multiple units, connect the white wires from up to six units together, **ONLY AFTER PROGRAMMING** them for the **same** pattern (see *Synchronization of Multiple Lights* section on next page).

If you are only installing one unit, cut the White wire short and tape the end.

Pattern Programming


- To change patterns briefly touch and release the Green wire to +12VDC.
- The cycle repeats after the last pattern.
- **Pattern Shortcuts:** Hold the Green wire to +12VDC for the length of time that corresponds to the pattern you would like to jump to.

After selecting a pattern, deactivate the light to store the selected pattern.

Phase 1 Flash Pattern	Phase 2 Flash Pattern	Pattern Type	Pattern Description	Shortcuts
1	13	K	Flicker †	Pattern 1: 3 sec or 1 flash
2	14	L	Fast Doubleflash	
3	15	M	Tripleflash †	
4	16	A3	Fast Quadflash †	Pattern 13: 9 sec or 3 flashes
5	17	A4	Fast Doubleflash †	
6	18	F	Quadflash †	Pattern 6: 6 sec or 2 flashes
7	19	G	Quadflash w/Post-Pop †	
8	20	H	Singleflash †	Pattern 18: 12 sec or 4 flashes
9	21	I	Doubleflash †	
10	22	-	Variable AKA Delta-Omega	
11	23	C	Post pop 1.4CPS †	
12	24	-	Random 0.4CPS	
NA	NA	NA	Steady	15 sec or 5 flashes

† SAE J845 Compliant Patterns when properly configured

Synchronization of Multiple Lights

You can synchronize up to six lights with  compatibility.

DO NOT CONNECT WHITE WIRES UNTIL PROGRAMMING HAS BEEN COMPLETED FOR ALL LIGHTS!!

1. Power up the first unit and select a Phase 1 pattern.
2. Program the second light with the same **Pattern Type**.
 - Use the same **Phase** if you want the lights to flash together (simultaneous).
 - Use the opposite **Phase** if you want the lights flash opposite one another (alternate).
3. After programming all lights, tie off the Pattern Select wires and connect the white wires together.
4. Test lights by applying power to all of them at the same time.

LED FIVE YEAR LIMITED WARRANTY

The manufacturer warrants this LED light against factory defects in material and workmanship for five years after the date of purchase. The owner will be responsible for returning to the Service Center any defective item(s) with the transportation costs prepaid. The manufacturer will, without charge, repair or replace at its option, products, or part(s), which its inspection determines to be defective. Repaired or replacement item(s) will be returned to the purchaser with transportation costs prepaid from the service point. A copy of the purchaser's receipt must be returned with the defective item(s) in order to qualify for the warranty coverage. Exclusions from this warranty include, but are not limited to, domes, and/or the finish. This warranty shall not apply to any light, which has been altered, such that in the manufacturer's judgment, the performance or reliability has been affected, or if any damage has resulted from abnormal use or service.

There are no warranties expressed or implied (including any warranty of merchantability or fitness), which extend this warranty period. **The loss of use of the product, loss of time, inconvenience, commercial loss or consequential damages, including costs of any labor, are not covered.** The manufacturer reserves the right to change the design of the product without assuming any obligation to modify any product previously manufactured.

This warranty gives you specific legal rights. You might also have additional rights that may vary from state to state. Some states do not allow limitations on how long an implied warranty lasts. Some states do not allow the exclusion or limitation of incidental or consequential damages. Therefore, the above limitation(s) or exclusion(s) may not apply to you.

If you have any questions concerning this or any other product, please contact our **Customer Service Department** at (585) 226-9787.

If a product must be returned for any reason, please contact our Customer Service Department to obtain a Returned Material Authorization number (RMA #) before you ship the product back. Please write the RMA # clearly on the package near the mailing label.

NOTICE

Due to continuous product improvements, we must reserve the right to change any specifications and information, contained in this manual at any time without notice. Star Headlight & Lantern Co., Inc. makes no warranty of any kind with regard to this manual, including, but not limited to, the implied warranties of merchantability and fitness for a particular purpose. Star Headlight & Lantern Co., Inc. shall not be liable for errors contained herein or for incidental or consequential damages in connection with the furnishing, performance, or use of this manual.